

# RCR @ Washington University in St. Louis

A case study in developing a centralized, fundamental  
RCR program to help fulfill NIH and NSF requirements

Blake R. Fuhler  
Manager | Research Education & Information

Office of the Vice Chancellor for  
**RESEARCH**

1

## Research @ WUSTL

- [ \$619M in sponsored research during FY11
- [ 1,100 PIs & 1050 postdocs @ WUSTL's four research-intensive schools:  
Medicine; Arts & Sciences; Engineering; Social Work
- [ 51 training grants (T32) and numerous mentored Ks and Fs



2

## The RCR Universe



3

# National Science Foundation (NSF)



- [ Career & discipline specific
- [ RCR elements undefined
- [ NSF Population: Undergraduate, graduate, and postdocs
- [ Education, oversight and compliance responsibility of the institution
- [ WUSTL Policy; largely impacts Danforth Campus

4

# National Institutes of Health (NIH)



- [ Prescribed RCR Elements
- [ NIH Population: undergraduates, graduates, postdocs and young PIs on mentored career awards (T, K & F awards)
- [ WUSTL Policy; largely impacts School of Medicine

5

# PERCSS

Program for the Ethical and Responsible Conduct of Science & Scholarship

- [ Online curriculum
  - [ Live workshops
- Office of the Vice Chancellor for  
**RESEARCH**

[percwustl.edu](http://percwustl.edu) | [RCR website](#) | [events calendar](#) | [RCR toolkit](#) | [Research News](#)

6

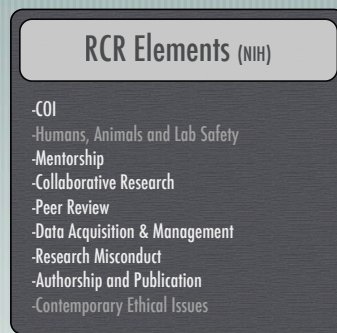
# Developing PERCSS

- [ Vice Chancellor for Research initiated RCR Committee (2004)
- [ Executive Committee on Research
- [ PERCSS (2009): Program for the Ethical and Responsible Conduct of Science & Scholarship
  - Campus-wide effort and resource

7

## PERCSS: Online Curriculum

- [ 8 online modules, developed in collaboration with research faculty
- [ Launched in Nov. 2009
- [ Mandatory for NSF; not mandatory (currently) for NIH
- [ New PHS/NIH COI regulations
- [ Centrally tracked

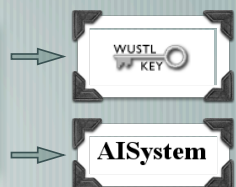


\*Introduction to Ethical and Responsible Research

8

## PERCSS: Under the hood

- [ Adobe Captivate: modules were developed with this software
- [ Adobe Connect: WUSTL has a license with Adobe—central areas use this as a learning technology platform for Adobe Captivate and Adobe Presenter modules
- [ Integrated with common sign-on (WUSTL Key)
- [ Completions are pushed to Compliance module for tracking



9

# PERCSS: RCR Workshops

- [ 5 events to date; average 100 attendees
- [ Event structure: plenary session with accompanying case studies led by faculty facilitators
- [ Not mandatory for either NSF or NIH
- [ Audience: highly recommended for postdocs but open to all
- [ Centrally tracked

10

## Compliance tracking

- [ Compliance module
  - Can pull information by individual, organization, or by proposal ID
  - Requirement IDs for online curriculum, live workshops, and informal face-to-face

11

Co

### View Requirement for an Organization

Enter the parameters below then press the Generate button.

☐ Select All Mandatory Requirements for Faculty

Requirement ID:  PERCSS Ethics Event

School:  ☒ Include Students from this School

☐ All Departments ☒ Select Department

Department:  BIOLOGY & BIOMED SCI GRAD AFFAIR

☒ All Divisions ☐ Select Divisions

#### Completion Status

☒ People who have met the requirement

Completion Date:

☐ People who have not met the requirement

☐ All people

#### Current Employee Status

☒ Active ☐ Inactive

☐ Both Active and Inactive

[Generate List](#)

ation, or by

workshops,

12

# WUSTL RCR Education

## OVCR

PERCSS  
-online curriculum  
-workshops

Education Calendar  
-tag RCR events

RCR website  
-requirements  
-education  
-Guide to writing  
RCR plan

RCR Users Groups

## Depts.

Example:  
Pediatrics  
-(6) T32 grants  
administered  
centrally

-All fellows and  
trainees are required  
to attend

Otolaryngology

## DBBS

Created and  
maintain for-credit  
course

-meets for (6)  
sessions

-limited to DBBS  
-materials  
published online  
for PIs to tailor to  
their needs

## CRTC

Offers for-credit  
course "Ethical and  
Regulatory Issues in  
Clinical Research"

## Funding Model

OVCR Budget

Department  
Budget

DBBS Budget

Tuition

13

# WUSTL RCR Education

## Key Statistics

Training Grants:  
51

Pre-doctoral Trainees:

-149- 401  
TOTAL

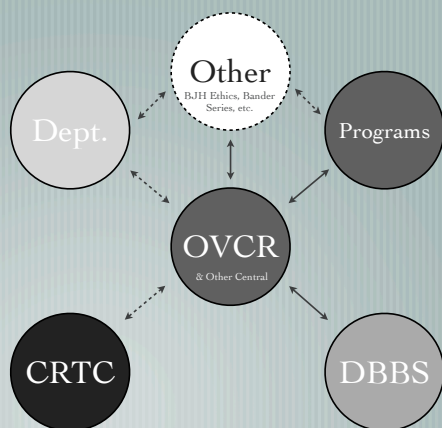
Post-doctoral Trainees:

-162- 1034  
TOTAL

\*Does not include F and K awards  
\*\*ONLY includes trainees on training grants

Other Central

EH&S: Lab Safety  
DCM: Animal Research  
HRPO: Human Research



14

# Teaching RCR

Can you teach someone to be ethical? If so, how?

RCR research

Findings: as is, no improvement in ethicality of decision making\*

\*Kligyte V, Marcy RT, Sevier ST, Godfrey ES, Mumford MD. "A Qualitative Approach to Responsible Conduct of Research (RCR) Training Development: Identification of Metacognitive Strategies." *Science and Engineering Ethics* 2007, 14(1): 3-31

Approaches: Bloom's taxonomy, Team-based Learning, etc.

Online vs. in-person

NIH requires face-to-face education

Different audiences = different schedules and learning styles

Author of ORI's book doubles down on online education

15

# OK, who should teach it?

- [ Ethicists vs. “Experts” vs. Trainees (Self-taught)
- [ Central vs. Department/Program Faculty
  - Clinical | Pre-clinical | Social/Behavioral

16

# Questions?



**Blake R. Fuhler**

Manager, Research Education & Information  
Office of the Vice Chancellor for Research  
Washington University in St. Louis  
[fuhler@wustl.edu](mailto:fuhler@wustl.edu)  
314-747-2941

Office of the Vice Chancellor for  
**RESEARCH**

17